



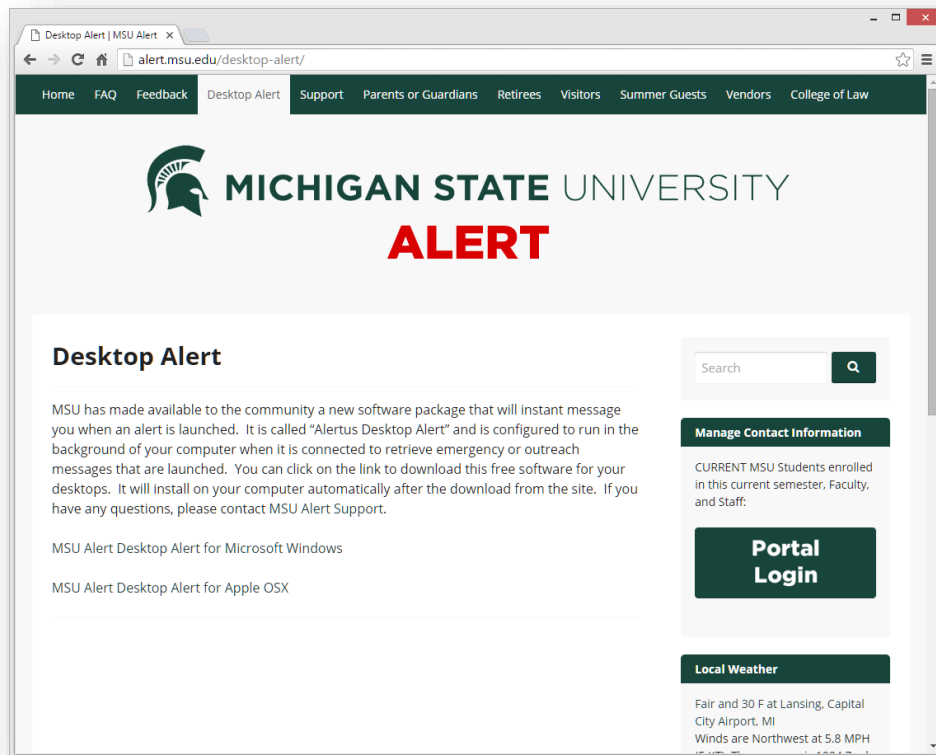
MICHIGAN STATE UNIVERSITY

**ALERT**

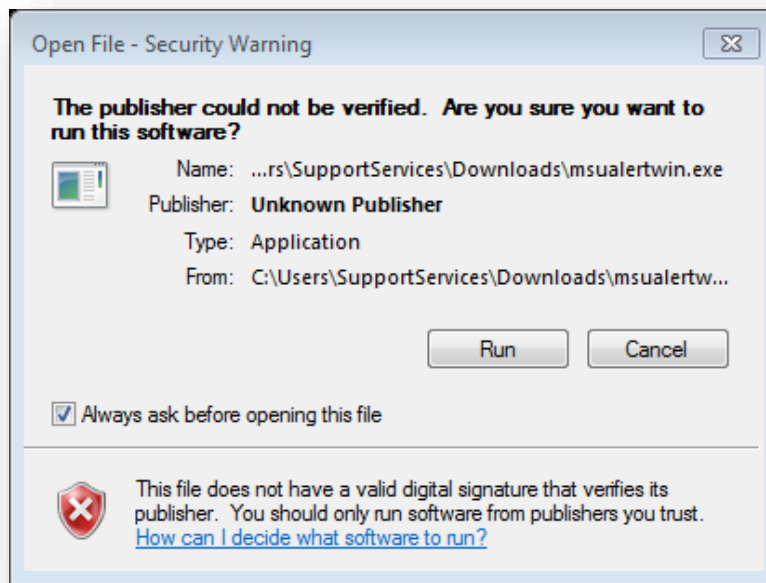
# DESKTOP ALERT

## INSTRUCTIONS FOR INSTALLING DESKTOP ALERT ON MICROSOFT WINDOWS

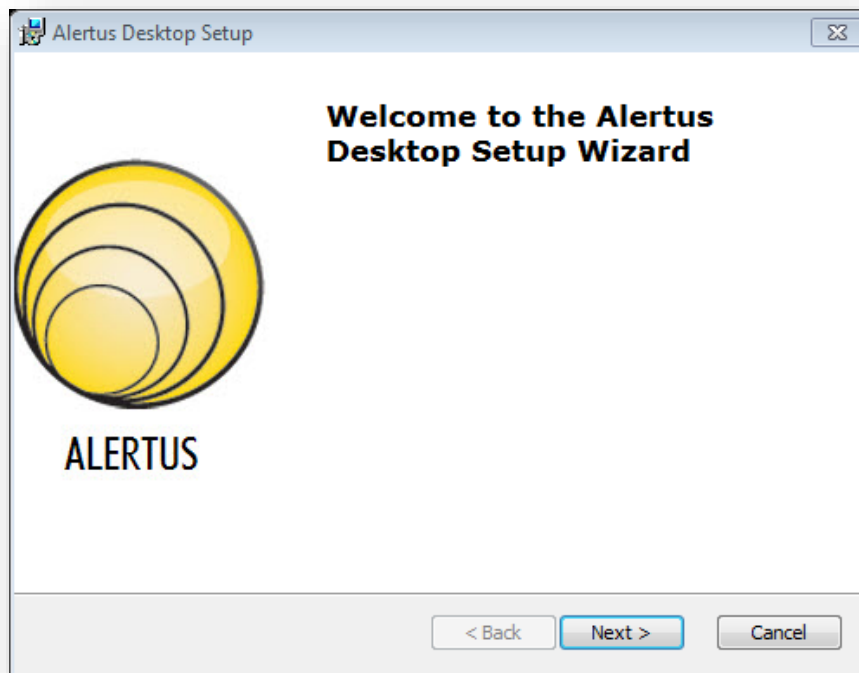
1. Download the msualertwin.exe file from <http://alert.msu.edu> website



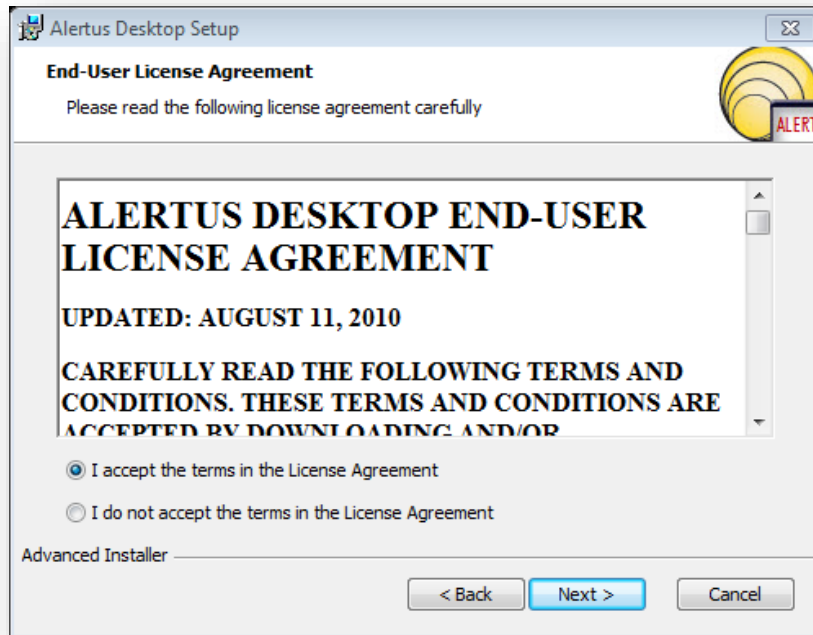
2. Press the run button to open the installer application



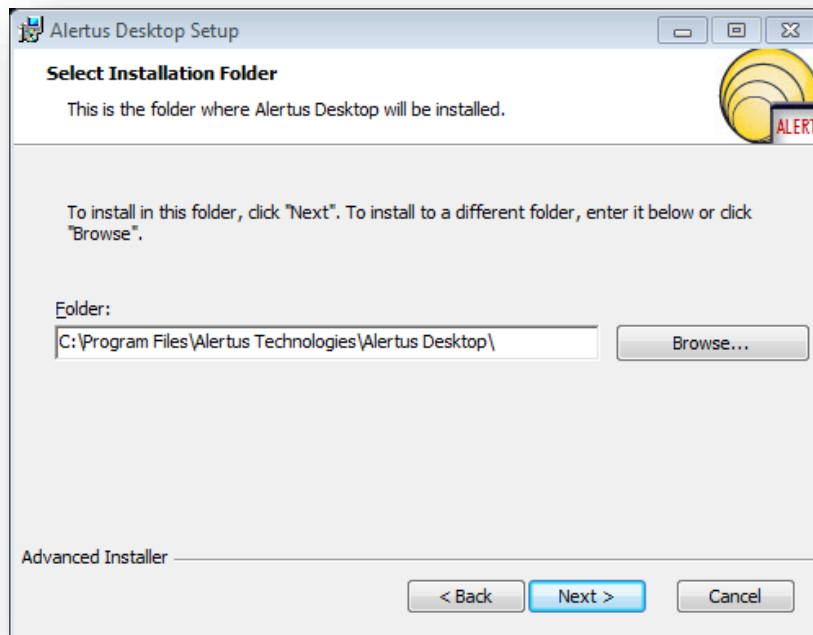
3. Press the next button to begin the installation



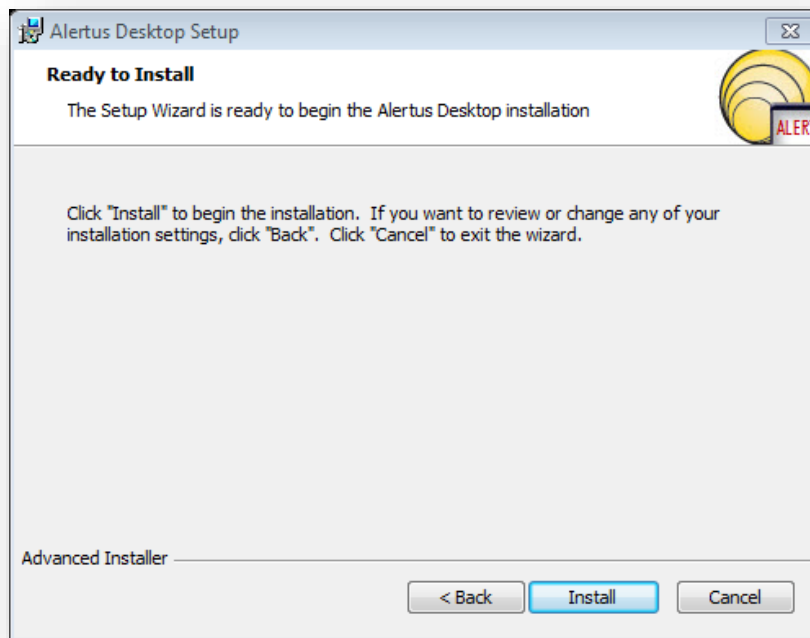
4. If you accept the terms in the license agreement, select that option and press next



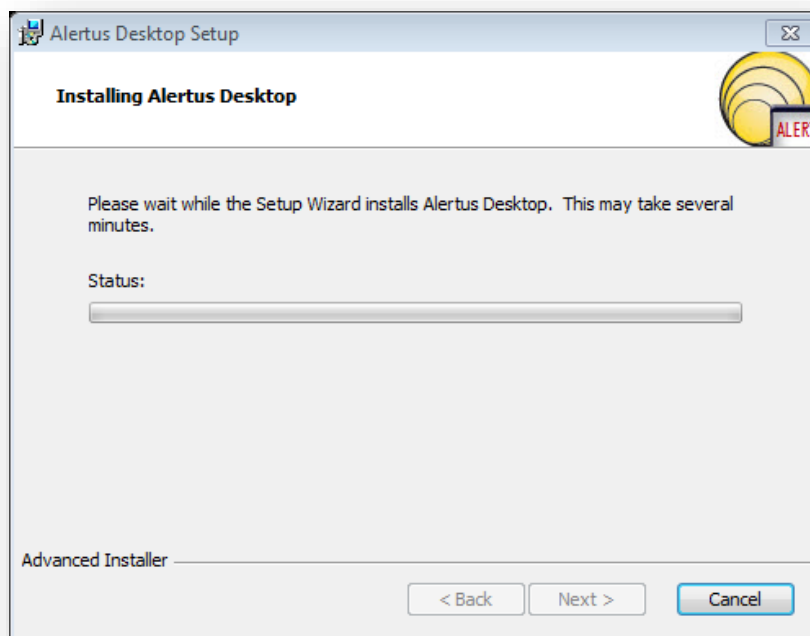
5. Select the installation folder to use on your computer



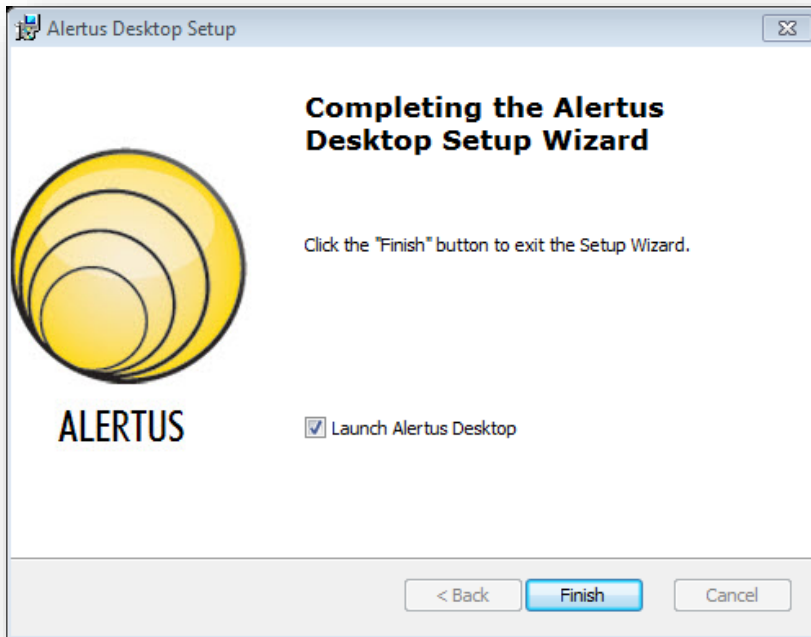
6. Press the install button to begin the installation



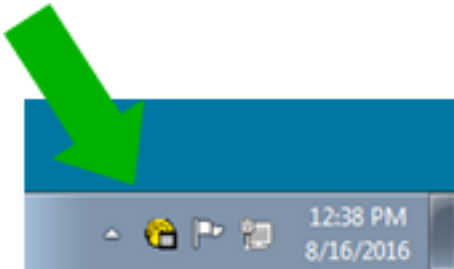
7. Wait for the application to be installed



8. Press the finish button with the installer is complete



9. When the application is running, an icon will appear in the taskbar system tray



10. Clicking on the icon will display a menu; the status should indicate "operational"

